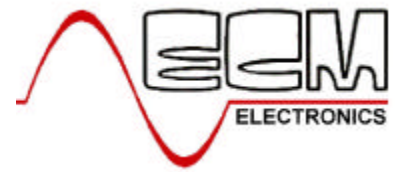
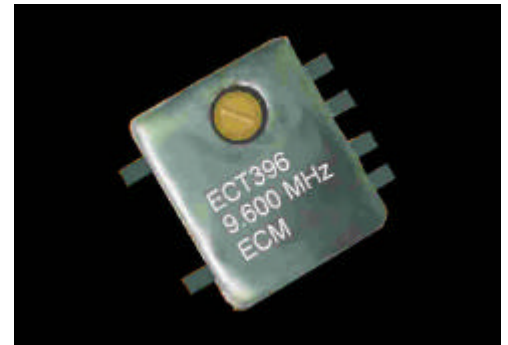


# Surface Mount TCXO



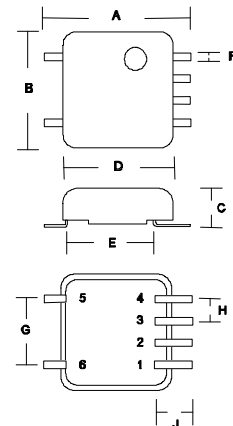
## ECT396

- Low Profile
- Low Current Consumption
- Excellent Stability
- 3V Supply
- Custom options available

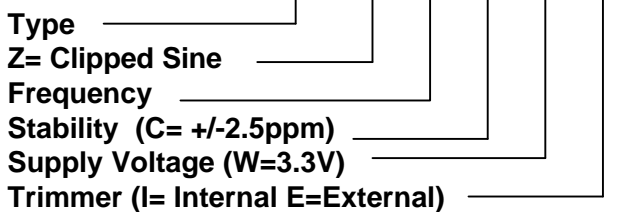


Parameter	ECT396	
Frequency Range	9.60 to 27.0Mhz	Specify
Temperature Stability	+/-2.5ppm -30 <sup>0</sup> to +75 <sup>0</sup> C (C)	
Storage Temp	-30 <sup>0</sup> to +80 <sup>0</sup> C	
Stability vs Supply	+/-0.3ppm	
Supply Voltage	+3V (W) +5V (X)	Specify
Supply Current	2.0mA	
Output Level	0.7V p-p (min) Vcc 3V 1.0V p-p (min) Vcc5V	
Output Waveform	DC Cut Clipped Sine	
Output Load	10KΩ//10pF	
Aging	+/-1ppm / yr	
Trim Range	+/-3ppm Internal Trimmer	

Environmental & Mechanical	
Humidity	+40 <sup>0</sup> C +/-2 <sup>0</sup> C 90% RH for 200Hours
Thermal Shock	+85 <sup>0</sup> C for 30 mins -30 <sup>0</sup> C for 30 mins
Vibration	10 - 55Hz 2mm amplitude 2 hours XYZ axis
Soldering Condition	235 +/-5 <sup>0</sup> c 2 Seconds +/-0.5 S



Part Numbering ECT396 Z 9.60 C W I



A	B	C	D	E	F	G	H	J
12.1	11.4	3.5	9.60	8.2	1.0	7.62	2.54	2.7

Dimensions in mm

Pin	1	2	3	4	5	6
	Vcc	N/C	GND	O/P	GND	GND

ECM Electronics Limited, Penmaen House, Ashington, West Sussex, RH20 3JR, UK  
Tel: +44(0)1903 892810: Fax: +44(0)1903 892738. Email: ecm@ecmelectronics.co.uk

Although we have attempted to accurately reflect the products we market. ECM reserve the right without prior notice to discontinue any product or make design changes we believe necessary. Issue 1